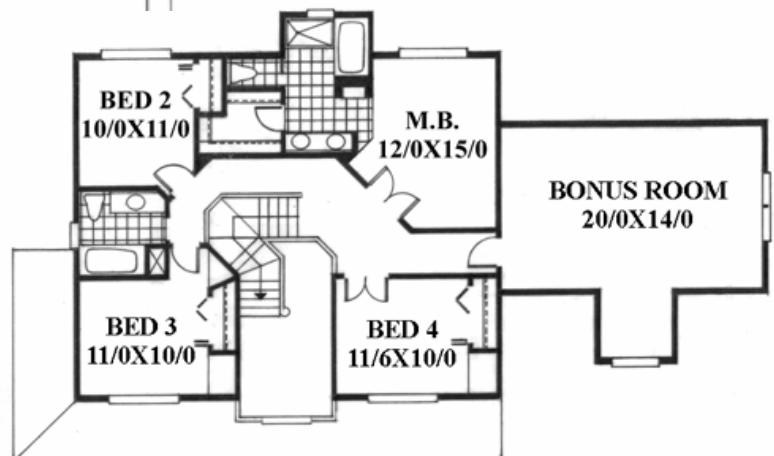
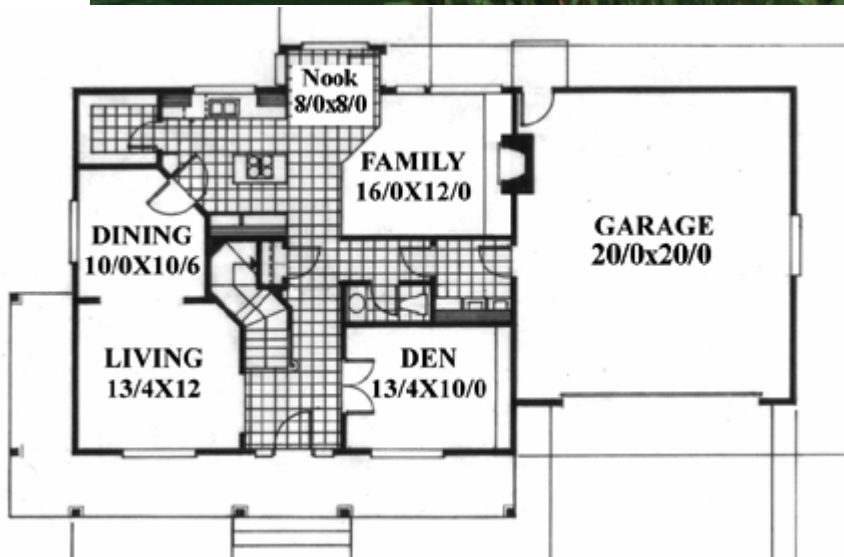


Plan
M-2544



Plan
M-2544

56'0" wide x 38'0" deep
2,544 sq. ft.

"An incredible design in the Country style. This plan has it all.. Four bedrooms a bonus room plus downstairs den compliment the large family room kitchen area. This plan also boasts a formal dining and living room.. The cozy front porch and authentic detailing complete the picture on this "perfect family plan."