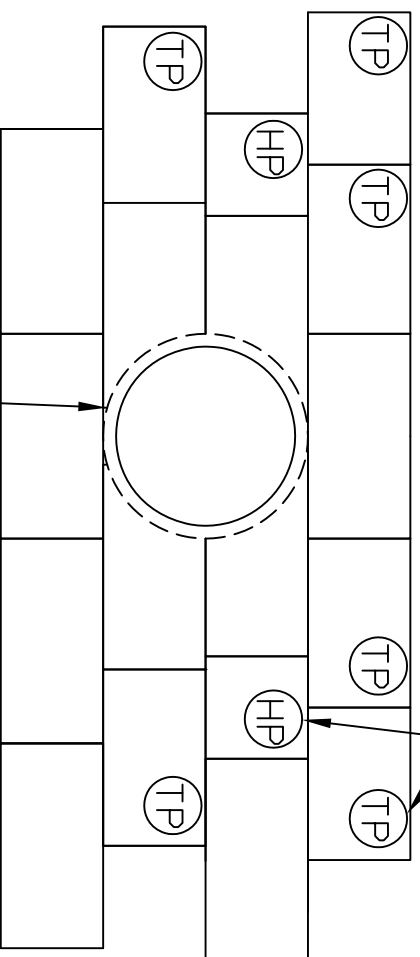


USE TRIM PANELS OR HALF WIDE
PANELS TO PICK UP RUNNING BOND
MINIMUM 3 PANELS OUT FROM PIPE



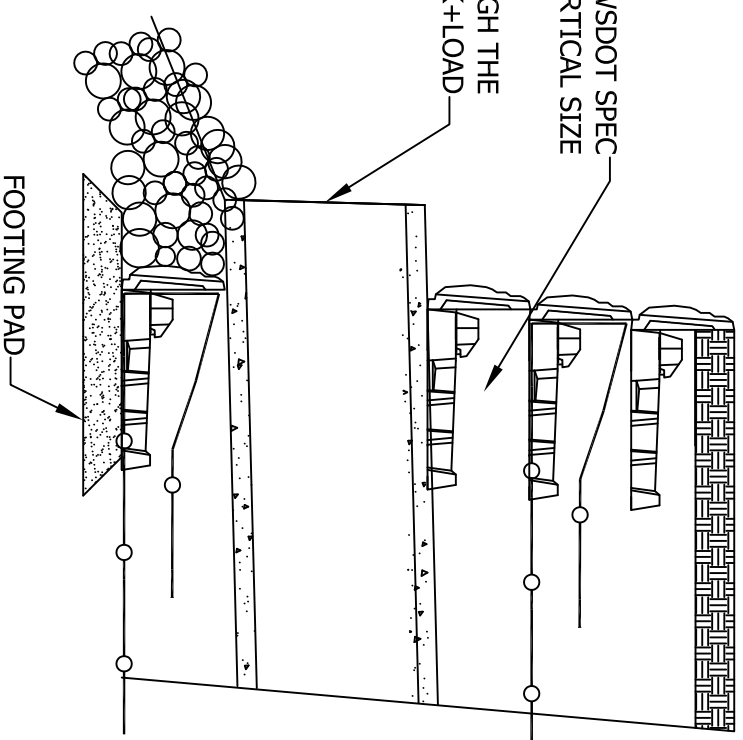
ELEVATION DETAIL FOR PIPE DIAMETERS 24" OR LESS

TP = TRIM PANEL HP = HALF PANEL

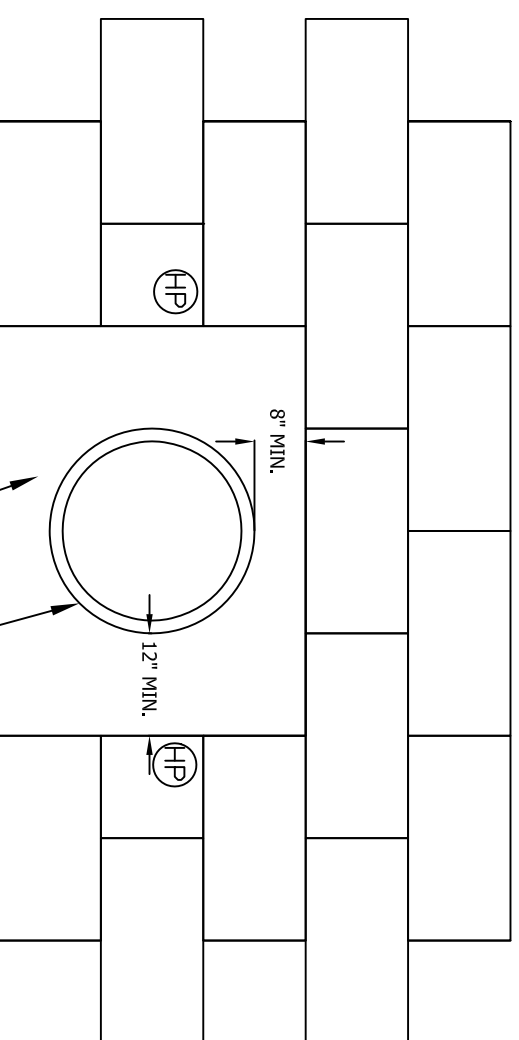
NOTE

- 1) TRIM PANELS TO FIT OUTSIDE DIAMETER OF PIPE
- 2) NO GEOSYNTHETIC SOIL REINFORCEMENT TO BE EXPOSED AROUND PIPE

FACING GRAVEL, WSDOT SPEC
9-03.14(4) 3/4" MAX PARTICAL SIZE
PIPE PENETRATION THROUGH THE
FACE OF WALL USING LOCK+LOAD



**24" PIPE PENATRATION CROSS SECTION AT WALL
FACE**



6" THICK CAST IN PLACE CONCRETE
HEAD WALL (F'C= 4000 PSI WITH MIN #4
REBAR AT 12" O.C EACH WAY) BY OTHERS

**ELEVATION DETAIL FOR PIPE
DIAMETERS GREATER THAN 24"**

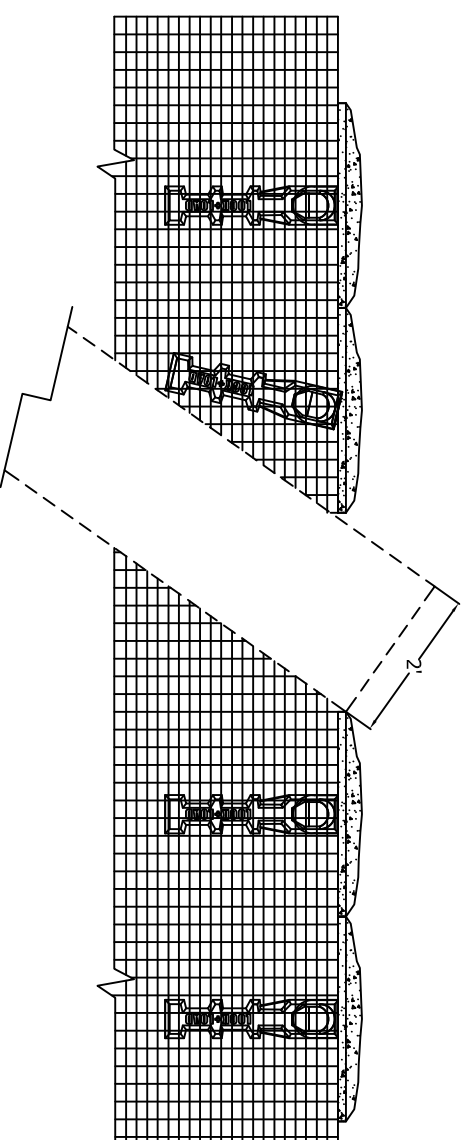
NOTE:

- SPECIAL HEADWALL DESIGN IS REQUIRED FOR
PIPE DIAMETERS GREATER THAN 5' FEET

DETAIL FOR PIPE DIAMETERS 24" AT UP TO 45°

NOTE

- 1) TRIM PANELS TO FIT OUTSIDE DIAMETER OF PIPE
- 2) NO GEOSYNTHETIC SOIL REINFORCEMENT TO BE EXPOSED AROUND PIPE



REV #	DESCRIPTION	DATE

LOCK+LOADTM
RETAINING WALL SYSTEMS

1681 CHESTNUT STREET, SUITE 400, VANCOUVER, B.C. V6K 4M6
Tel: (604) 732-9999 Fax: (604) 737-1140
Web site: www.lock+load.com

PROJECT NAME	24" HORIZONTAL PIPE
CITY	
DATE	01/06/12
SCALE	RC/DA
OUR PROJECT NUMBER	
OUR DRAWING NUMBER	LL-WSD01-8-24 PIPE OUTLET